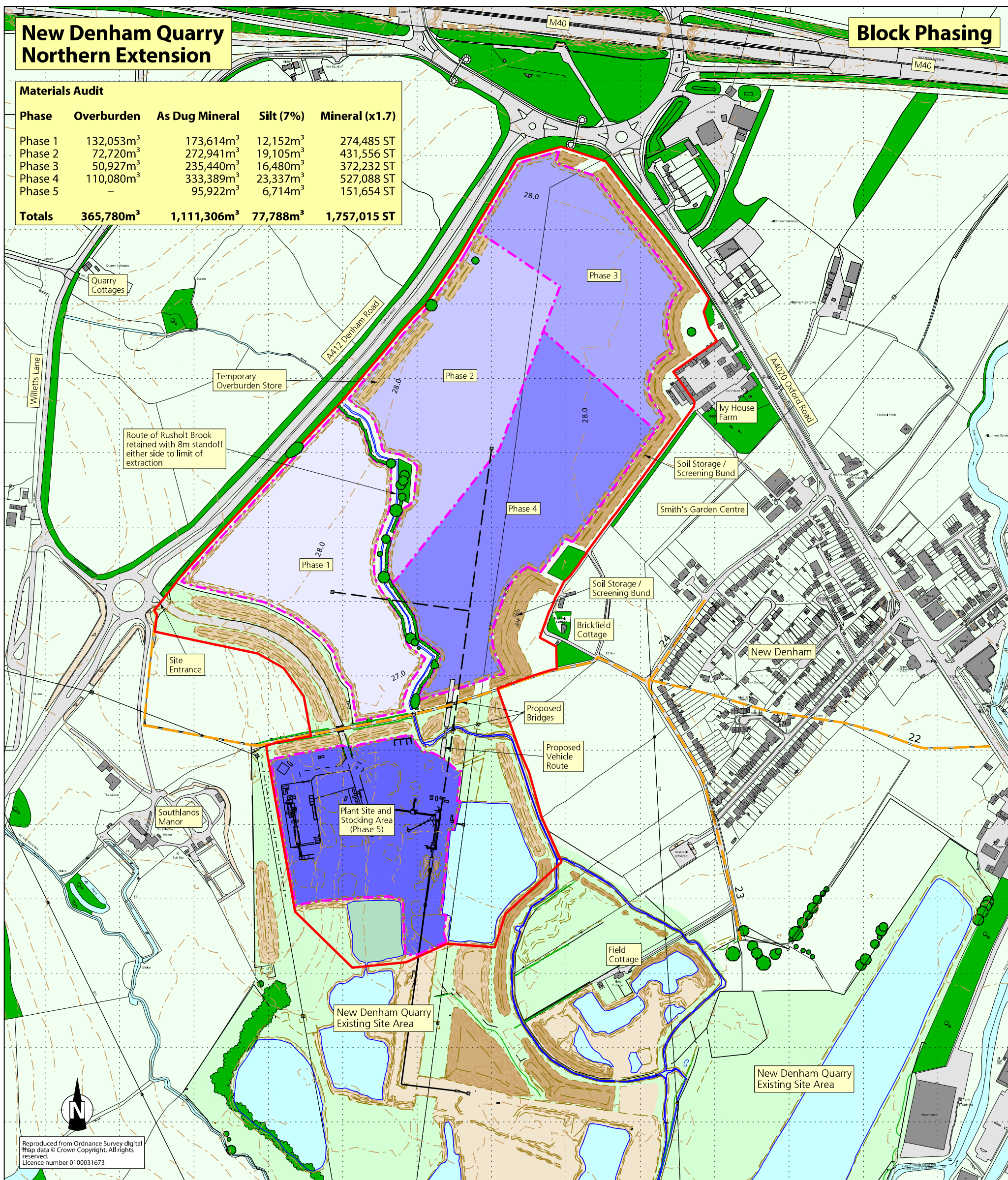


New Denham Quarry Northern Extension

Block Phasing

Materials Audit

Phase	Overburden	As Dug Mineral	Silt (7%)	Mineral (x1.7)
Phase 1	132,053m ³	173,614m ³	12,152m ³	274,485 ST
Phase 2	72,720m ³	272,941m ³	19,105m ³	431,556 ST
Phase 3	50,927m ³	235,440m ³	16,480m ³	372,232 ST
Phase 4	110,080m ³	333,389m ³	23,337m ³	527,088 ST
Phase 5	-	95,922m ³	6,714m ³	151,654 ST
Totals	365,780m³	1,111,306m³	77,788m³	1,757,015 ST



Legend

- Planning Application Boundary
- Proposed Limit of Mineral Extraction / Phasing Boundaries
- Phase 1 Mineral Extraction
- Phase 2 Mineral Extraction
- Phase 3 Mineral Extraction
- Phase 4 Mineral Extraction
- Phase 5 Mineral Extraction
- Temporary soil storage
- Proposed conveyor route
- Existing Vegetation / Vegetation to be Retained
- Undisturbed Land / Wet / Dry Lagoons

Please Note : The extraction boundary will be modified accordingly as the scheme progresses to take into account trees to be retained and their root protection areas (please see Dwg No M12.162(g).D.021)

Summerleaze

PleydellSmithyman

THIS DRAWING MAY NOT BE USED WITHOUT CONSENT OF:
 PLEYDELL SMITHYMAN LIMITED
 20A THE WHARFAGE, IRONBRIDGE
 SHROPSHIRE TF8 7NH
 T. 01952 433211 F. 01952 433323
 E. psl@pleydellsmithyman.co.uk
 www.pleydellsmithyman.co.uk

DRAWING STATUS

FINAL

PROJECT
NEW DENHAM QUARRY NORTHERN EXTENSION

CLIENT
Summerleaze Ltd

TITLE
Block Phasing

DATE
July 2015

SCALE
1:5000 @A3

DRAWN
LMB

CHECKED
RJS

DRAW NO.
M12.162(g).D.002