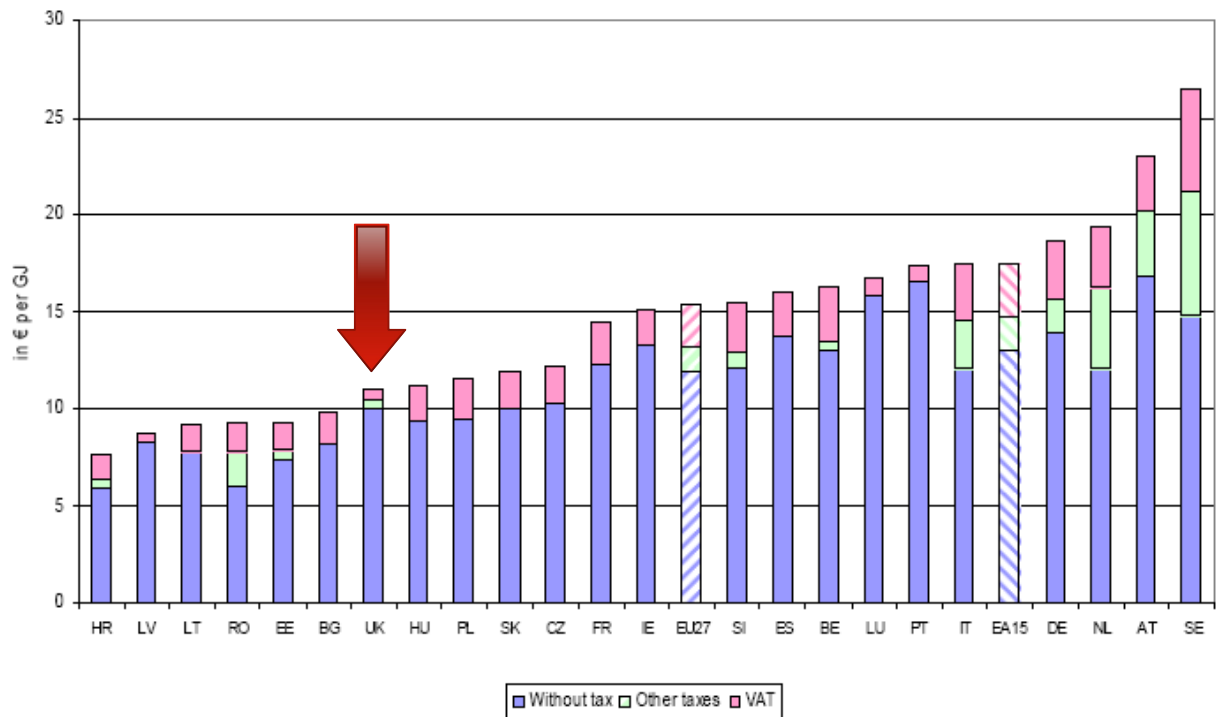
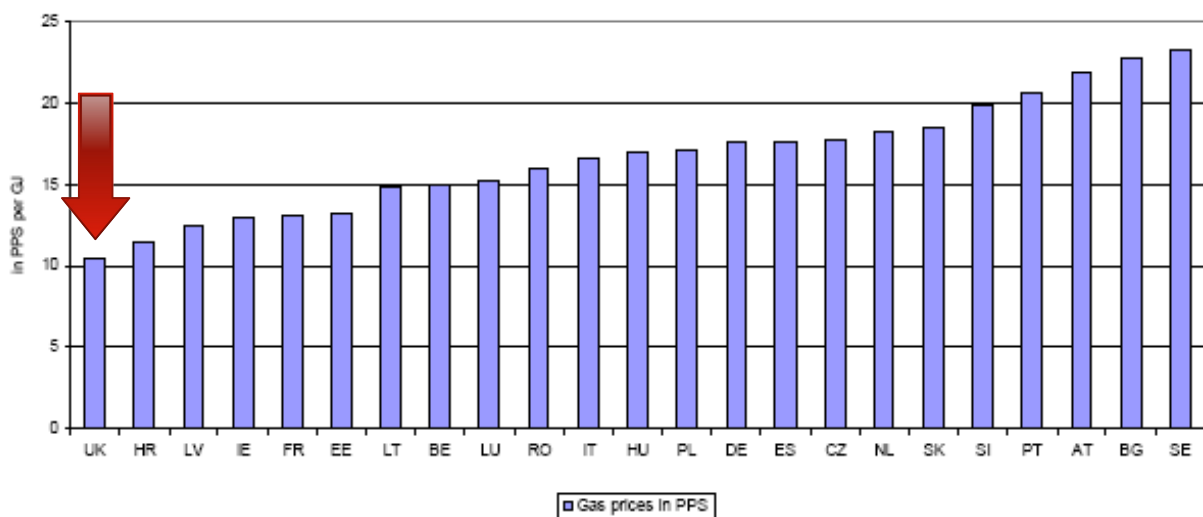


From European Commission, DG TREN Staff Working Document, *Report on Progress in Creating the Internal Gas and Electricity Market* (11/3/1009, SEC(2009) 287)

**Figure 5.4 Gas prices for household consumers (2008 s01) in €/GJ <sup>11</sup>**

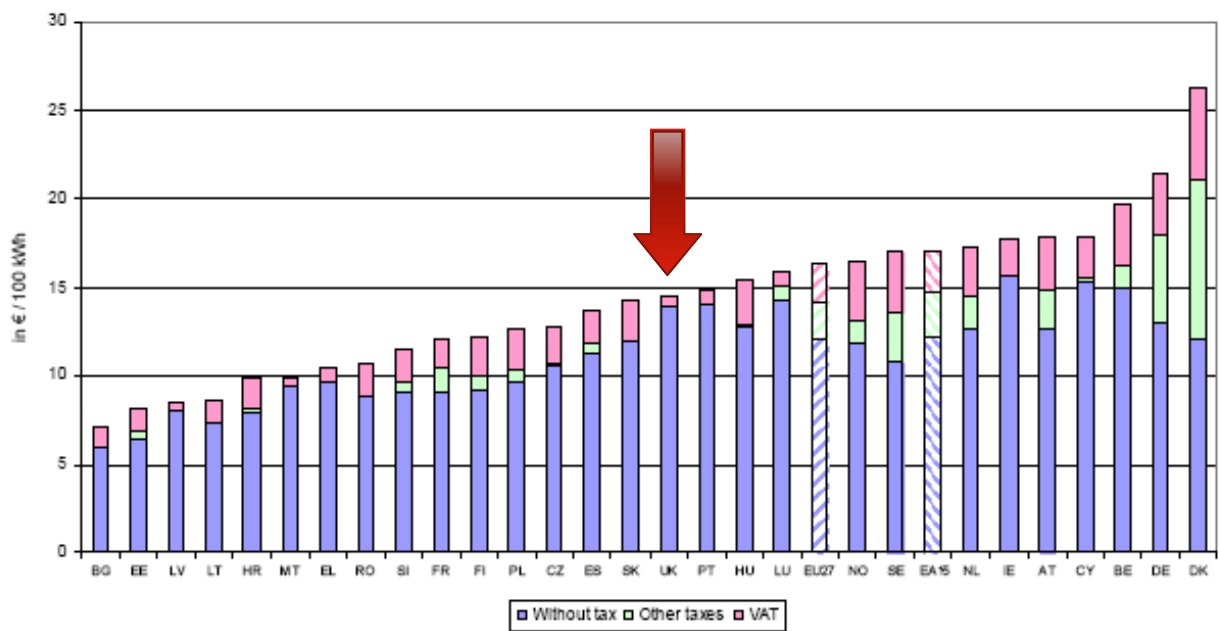


**Figure 5.5 Gas prices for household consumers (2008 s01) in PPP**



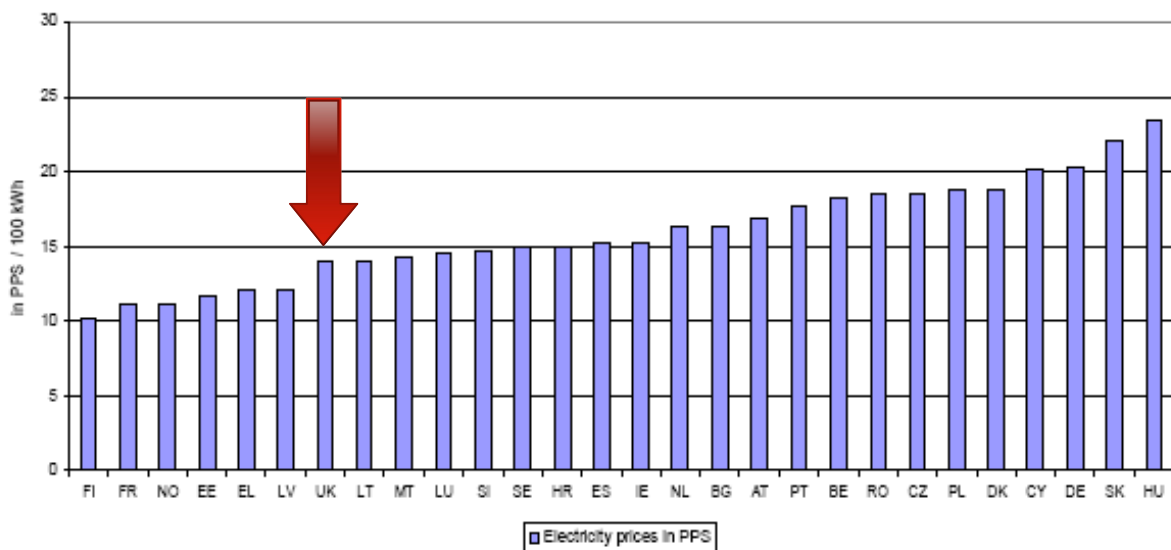
Denmark missing (data presumably not available at time of going to press, but see graphs below for previous year (2007): Denmark has highest prices (at current exchange rates, but not at PPP) in the EU. Finland, Greece, Malta and Cyprus also missing, presumably because of negligible use of gas for domestic energy.

**Figure 5.1 Electricity prices for household consumers (2008 s01) in €/100kWh<sup>9</sup>**



Source: Eurostat

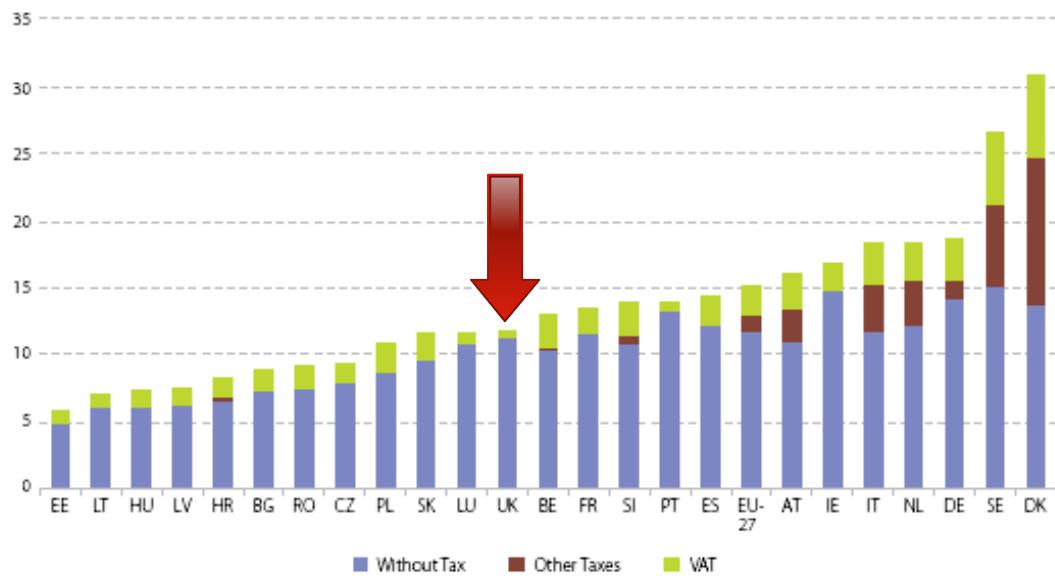
**Figure 5.2 Electricity prices for household consumers (2008 s01) in PPP**



From Eurostat, *European Price Statistics 2008*:

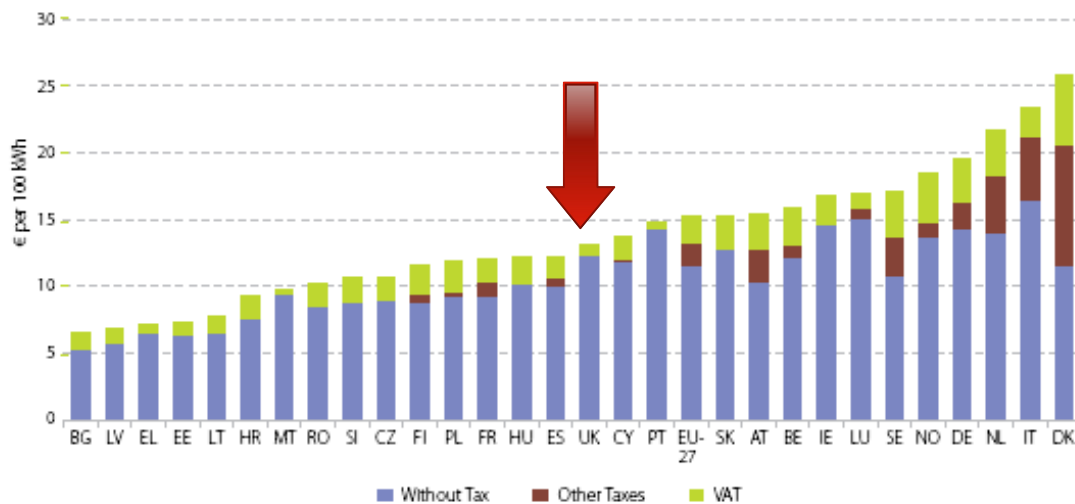
**Graph 11:** Composition of the gas prices for household consumers on 1 January 2007 (in EUR per GJ).

*Standard consumer D3: annual consumption of 83.7 GJ*



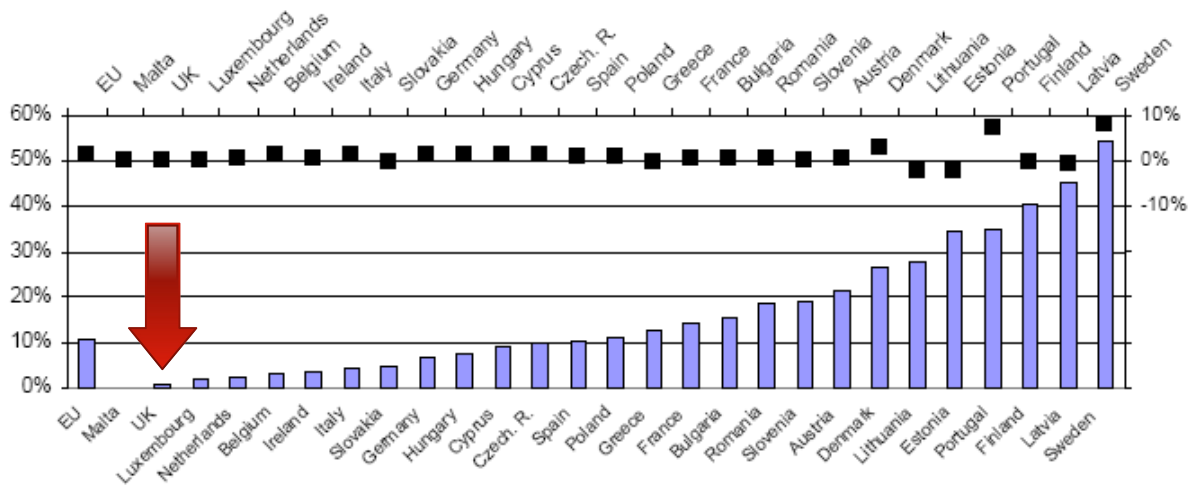
**Graph 9:** Composition of electricity prices for household consumers on 1 January 2007 (in EUR per 100 kWh).

*Standard consumer with annual consumption of 3 500 kWh.*

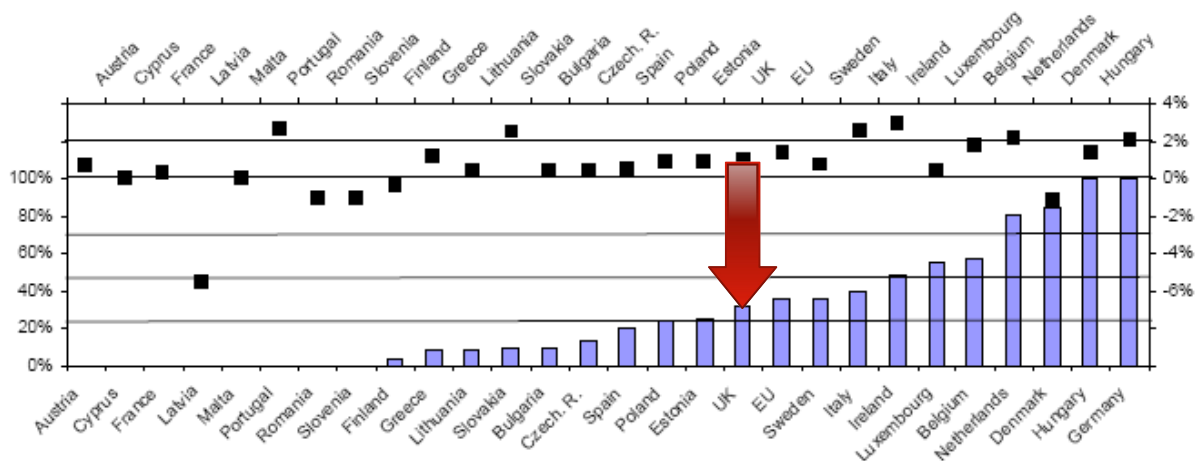


From European Commission, *Renewable Energy Progress Report (24/4/2009, COM(2009) 192)*:

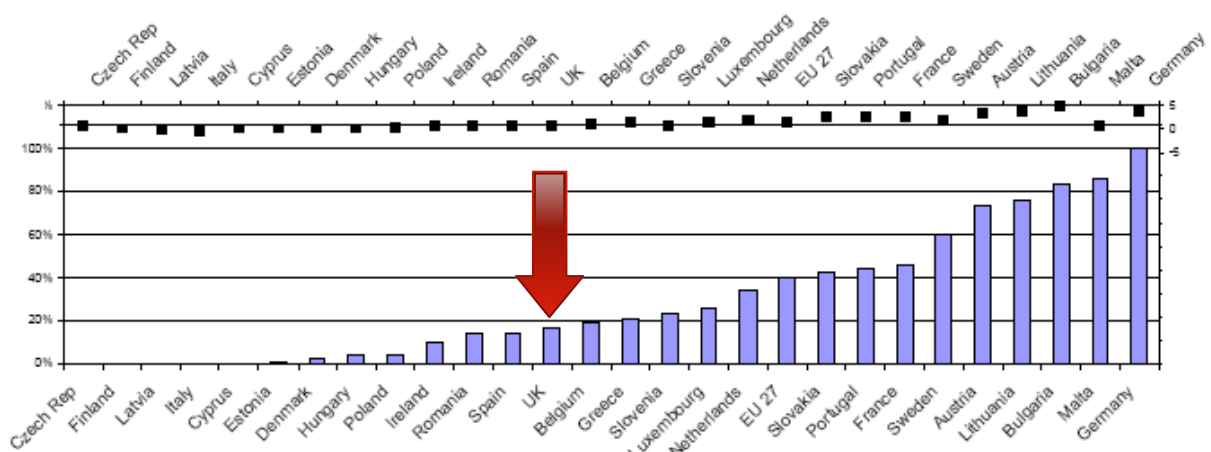
**The share of renewable energy in the heating sector in 2006 (columns and left hand axis) and the (stagnant) growth between 2004 and 2006 for all but three Member States (points, right hand axis).**



**The progress made towards the 2010 target (columns and left hand axis) and the change in Member State's renewable electricity shares 2004-2006 (points, right hand axis).**



**The progress made towards the national 2010 targets (columns and left hand axis) and the change in Member State's renewable transport fuel shares 2004-2006 (points, right hand axis).**





## Household final energy consumption, 2007

2007	Electricity		Gas		Solid fossil fuels		Petroleum products		Biomass		Direct heat		Solar thermal		Geo-thermal		Household final energy consump. (GWh)	Population	Household FEC per capita (MWh)	GDP per capita (EUR)	Heating degree-days	Household FEC (capita / degree-day (kWh))
	Share	Direct cost	Heat pump cost	Share	Cost	Share	Cost	Share	Cost	Share	Cost	Share	Cost	Share	Cost	Share						
AT	19.90%	155.59	44.45	20.81%	59.65	1.70%	55.29	21.64%	25.96%	40.00	8.92%	60.00	1.09%	0.00%	71.199	8,298,923	8.58	32,600	3,171	2,705		
BE	23.13%	162.17	46.33	40.37%	49.03	1.59%	46.95	32.23%	2.46%		0.17%		0.05%	0.00%	94,459	10,584,534	8.92	31,500	2,437	3,662		
DE	19.97%	196.64	56.18	46.68%	69.24	0.77%	51.01	18.38%	8.24%	45.00	5.15%	60.00	0.50%	0.31%	701,556	82,314,906	8.52	29,500	2,798	3,046		
DK	21.00%	264.00	75.43	14.06%	113.61	0.00%	86.77	11.45%	20.89%	52.08	32.21%	75.00	0.16%	0.00%	51,881	5,447,084	9.52	41,500	2,988	3,187		
ES	38.63%	121.39	34.68	23.82%	52.50	1.15%	52.40	23.06%	12.78%	26.04	0.00%		0.41%	0.00%	185,324	44,474,631	4.17	23,400	1,789	2,329		
FI	36.91%	117.57	33.59	0.74%		0.24%	51.68	12.98%	19.45%	33.00	29.66%	35.00	0.02%	0.00%	58,231	5,276,955	11.04	34,000	5,312	2,077		
FR	30.22%	146.68	41.91	31.20%	63.78	0.84%	54.37	19.97%	17.49%	35.00	0.00%		0.08%	0.22%	482,354	63,392,140	7.61	29,800	2,212	3,440		
GR	28.97%	77.92	22.26	3.32%		0.04%	51.68	49.63%	14.21%	35.83	0.77%		2.95%	0.13%	61,976	11,171,740	5.55	20,400	1,489	3,726		
IE	23.81%	163.88	46.82	20.34%	69.28	16.28%	59.87	38.72%	0.79%	40.00	0.00%		0.03%	0.03%	33,855	4,312,526	7.85	43,700	2,552	3,076		
IT	20.71%	212.51	60.72	57.24%	66.49	0.02%	99.33	16.27%	5.10%	44.79	0.48%	65.00	0.19%	0.00%	324,640	59,131,287	5.49	26,000	1,715	3,201		
LU	10.89%	173.73	49.64	46.90%	45.51	0.00%	43.41	34.95%	2.42%		4.84%		0.00%	0.00%	7,687	476,187	16.14	75,900	2,738	5,897		
NL	22.62%	213.05	60.87	71.83%	67.63	0.04%	77.90	0.64%	2.48%	55.21	2.21%	55.00	0.19%	0.00%	107,415	16,357,992	6.57	34,600	2,424	2,709		
PT	37.05%	144.90	41.40	6.84%	52.53	0.00%	59.09	19.33%	36.09%		0.19%		0.47%	0.00%	37,414	10,599,095	3.53	15,400	1,258	2,806		
SE	50.64%	180.05	51.44	0.61%	96.17	0.00%	92.76	2.18%	8.96%	53.13	37.27%	65.00	0.13%	0.00%	78,270	9,113,257	8.59	36,200	5,068	1,695		
UK	24.38%	135.65	38.76	66.73%	43.19	1.38%	47.43	6.60%	0.78%	47.92	0.13%	33.00	0.00%	0.00%	471,969	60,816,701	7.76	33,700	2,818	2,754		
BG	38.90%	66.44	18.98	1.59%	31.23	10.76%		1.21%	29.30%		18.19%	30.00	0.00%	0.00%	24,097	7,679,290	3.14	3,800	2,357	1,331		
CY	46.00%	137.05	39.16	0.00%		0.00%	70.61	35.67%	3.00%		0.00%		15.33%	0.00%	3,489	778,684	4.48	20,000	694	6,456		
CZ	21.29%	110.10	31.46	34.43%	34.85	9.37%	52.66	0.42%	18.82%		15.62%	50.00	0.05%	0.00%	68,780	10,287,189	6.69	12,300	3,175	2,106		
EE	15.80%	74.84	21.38	5.09%	21.81	1.14%	48.12	0.83%	39.40%	29.17	37.63%	25.00	0.00%	0.00%	11,188	1,342,409	8.33	11,400	4,041	2,062		
HU	17.42%	125.22	35.78	57.18%	27.36	2.43%	92.16	2.07%	9.66%	41.67	11.19%	50.00	0.04%	0.00%	64,558	10,066,158	6.41	10,100	2,552	2,513		
LT	15.72%	79.89	22.82	10.90%	26.29	3.85%	44.63	2.82%	29.73%	30.83	36.99%	38.00	0.00%	0.00%	15,689	3,384,879	4.63	8,400	3,724	1,245		
LV	10.48%	68.20	19.48	7.48%	27.20	1.29%	55.93	2.38%	50.27%	25.00	28.16%	40.00	0.00%	0.00%	17,096	2,281,305	7.49	9,300	3,889	1,927		
MT	70.37%	102.55	29.30	0.00%		0.00%	53.11	29.63%	0.00%		0.00%		0.00%	0.00%	942	407,810	2.31	13,300	332	6,967		
PL	12.46%	122.89	35.11	17.41%	39.21	28.67%	50.15	5.29%	12.47%	33.96	23.63%	40.00	0.00%	0.05%	211,585	38,125,479	5.55	8,100	3,222	1,722		
RO	11.90%	98.23	28.06	27.53%	32.57	0.15%	7.78%	7.78%	35.71%	23.96	16.72%	26.00	0.00%	0.20%	87,306	21,565,119	4.05	5,800	2,750	1,472		
SI	24.81%	105.04	30.01	8.11%	51.56	0.00%	53.48	27.29%	30.92%	41.67	8.87%	40.00	0.00%	0.00%	12,188	2,010,377	6.06	17,100	2,678	2,264		
SK	19.03%	147.94	42.27	53.34%	43.59	2.02%	53.17	0.58%	1.87%		23.16%	45.00	0.00%	0.00%	24,202	5,393,637	4.49	10,200	3,076	1,459		
CH	26.75%			16.72%		0.16%		45.89%	5.52%	46.25	2.40%		0.23%	2.31%	65,314	7,508,739	8.70	41,500	3,166	2,747		
HR	32.03%			29.59%	29.46	0.23%		15.03%	14.79%		8.04%		0.06%	0.00%	19,969	4,441,238	4.50	9,800	2,234	2,013		
IS	11.09%			0.00%		0.00%		0.48%	0.00%		29.58%		0.00%	59.00%	7,234	307,672	23.51	46,900	4,946	4,754		
NO	78.48%	201.63	57.61	0.10%		0.00%		5.18%	15.00%		1.26%		0.00%	0.00%	45,124	4,681,134	9.64	60,400	5,326	1,810		
TR	15.13%			33.30%		13.27%		8.42%	24.05%		0.00%		1.42%	4.41%	241,055	69,689,256	3.46	6,400	2,571	1,346		

Share = share of household final energy consumption

All costs/prices in EUR/MWh

Biomass cost is price of wood-pellets as proxy for various types of biomass (other types will be cheaper but limited outside poorer, rural areas)

Petroleum products cost is price of heating oil

Direct heat costs are estimated from 1999-2003 figures and subsequent fuel-cost increases